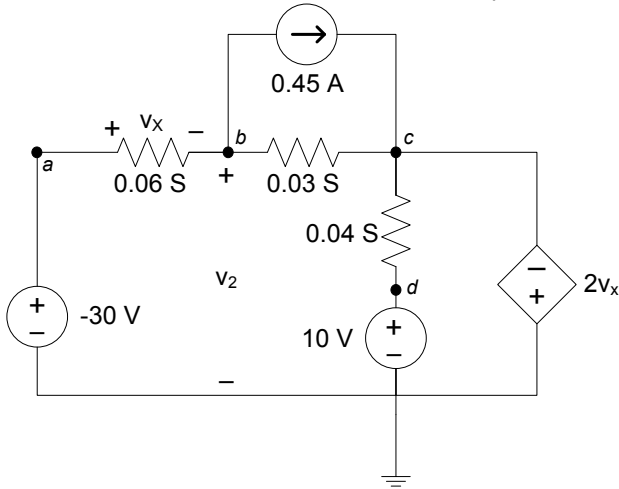
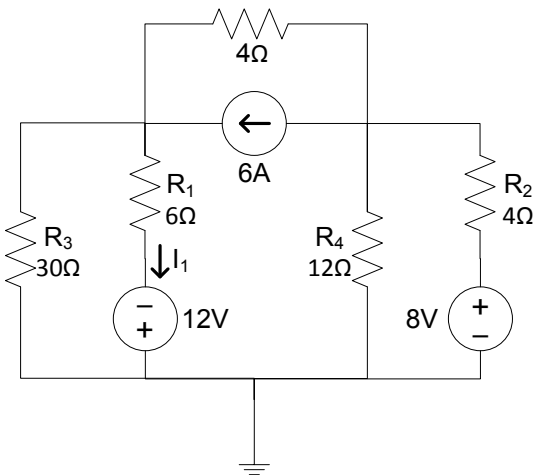


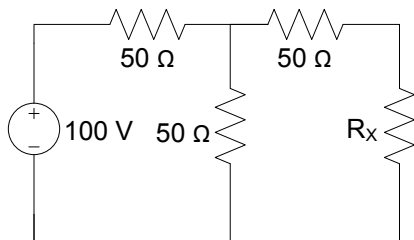
1. Find v_2 using nodal analysis. (S stands for Siemens – the unit for conductance)



2. Using the principle of superposition, find the current i_1 .

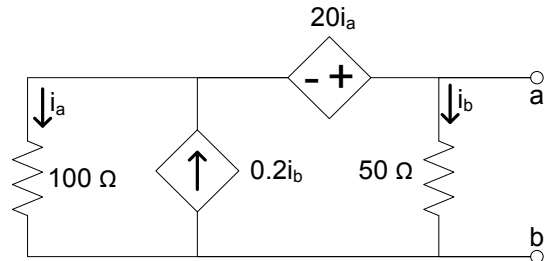


3. a) Determine the resistance of resistor R_x such that R_x receives maximum power.
b) Determine the power that R_x receives in a).

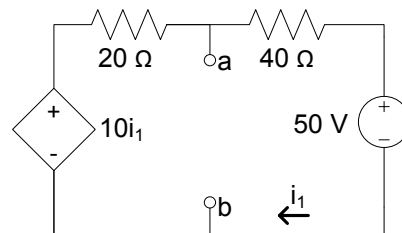


4. Determine the Thevenin and Norton equivalent circuits seen across terminals a and b.

4.1.



4.2.



5. Find V_o in terms of V_i .

